

MONTHLY MEMBERSHIP PROGRESS REPORT

LOCATION WASHINGTON

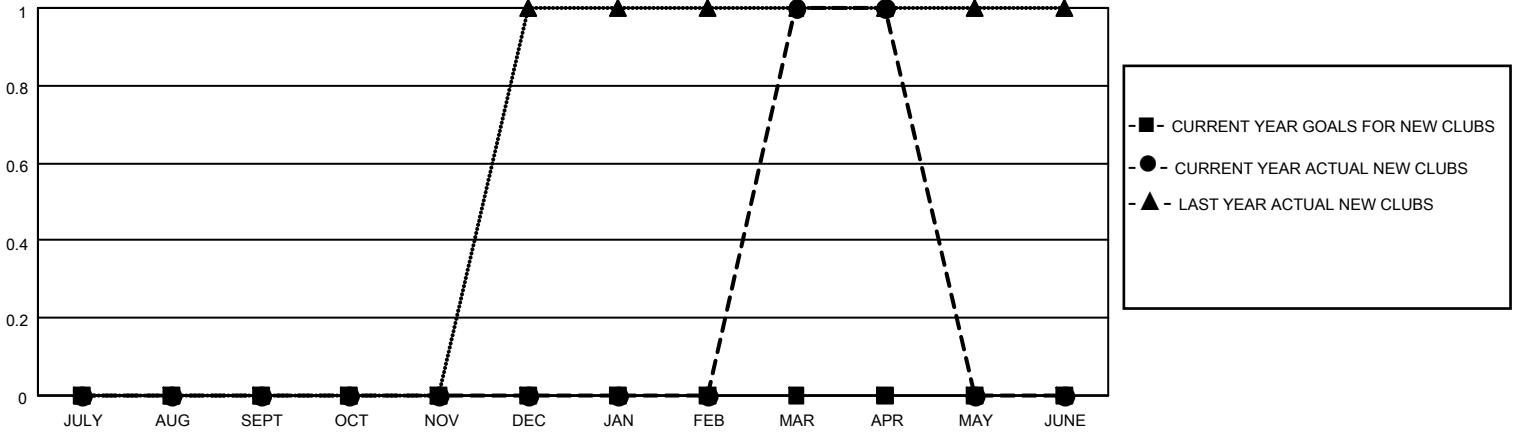
District 19 C

Results as of: 4/30/2023

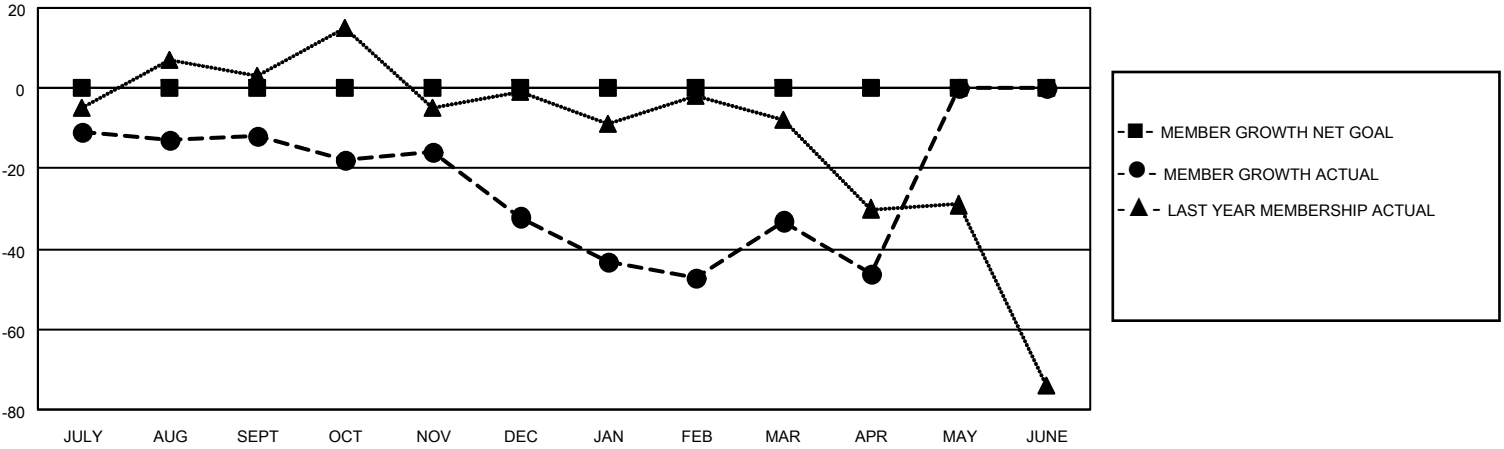
Clubs			
RESULTS FOR 2022-2023			
QUARTER	NEW CLUB GOAL	NEW CLUBS	DROPPED CLUBS
JULY/AUG/SEPT	0	0	1
OCT/NOV/DEC	0	0	0
JAN/FEB/MAR	0	1	1
APR/MAY/JUNE	0	0	0

Members			
RESULTS FOR 2022-2023			
QUARTER	MEMBER GROWTH NET GOAL	MEMBER GROWTH ACTUAL	DROPPED MEMBERS ACTUAL (including transfers)
JULY/AUG/SEPT	0	22	30
OCT/NOV/DEC	0	29	41
JAN/FEB/MAR	0	50	47
APR/MAY/JUNE	0	9	22

GOALS AND ACTUAL NEW CLUBS CUMULATIVE



GOALS AND ACTUAL MEMBERS CUMULATIVE



DROPPED CLUBS: 2	
DROPPED MEMBERS	
DECEASED	16
CLUB CANCELLED	0
OTHER	124
TOTAL	140

27 CLUBS OF 43 ADDED 1 OR MORE NEW MEMBERS

[CLICK HERE FOR CUMULATIVE MEMBERSHIP DATA](#)

<u>GENDER DISTRIBUTION</u>	
MALE	612 (55.09%)
FEMALE	498 (44.82%)
NON BINARY	0 (0.00%)
PREFER NOT TO ANSWER	1 (0.09%)
TOTAL FAMILY UNIT MEMBERS	284
FAMILY MEMBERS PAYING HALF DUES	147